

\$4000.00 / Monthly - PH 1 - 4055 PARKSIDE VILLAGE DRIVE

Listing ID: W8490008

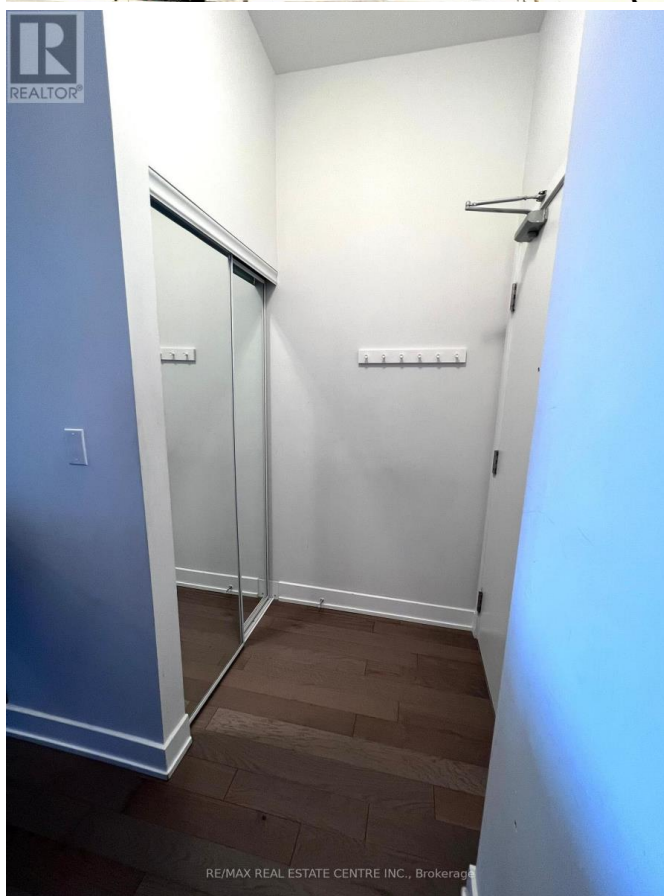
\$4000.00 / Monthly

3 Bedrooms, 2 Bathrooms Single Family

PH 1 - 4055 PARKSIDE VILLAGE
DRIVE, Mississauga, Ontario, L5B0K8

Beautiful, stunning 3 bedroom condo located in the heart of Mississauga City Centre!!! Unit features hardwood flooring throughout, upgraded kitchen with Kitchen Aid appliances and granite counter tops. Open concept living/dining room. Walk out to private balcony. Spacious master bedroom with 3 pc ensuite! Two spacious bedroom, both with walk out to balcony. Great location, walking distance to Square One, YMCA, Celebration Square, Living Arts, City Hall, Central Library, minutes to 403 & QEW. Lots of natural light. Safe neighborhood and clear view. ****

EXTRAS **** Private Balcony. Includes 1 Parking And 1 Locker. Top Of The Line Amenities Including Exercise Room, Yoga Studio, Theatre, Games Room, Party Room, Children's Play Area, Library And Outdoor Terrace. (id:54154)



\$4000.00 / Monthly - PH 1 - 4055 PARKSIDE VILLAGE DR



MLS®, REALTOR®, and the associated logos are trademarks of The Canadian Real Estate Association

Data Provided by: Toronto Regional Real Estate Board

Last Modified: 23/07/2024 11:37:41 AM

Listing Office:RE/MAX REAL ESTATE CENTRE INC.