

\$3400.00 / Monthly - 2507 - 36 ELM DRIVE

Listing ID: W8305046

\$3400.00 / Monthly

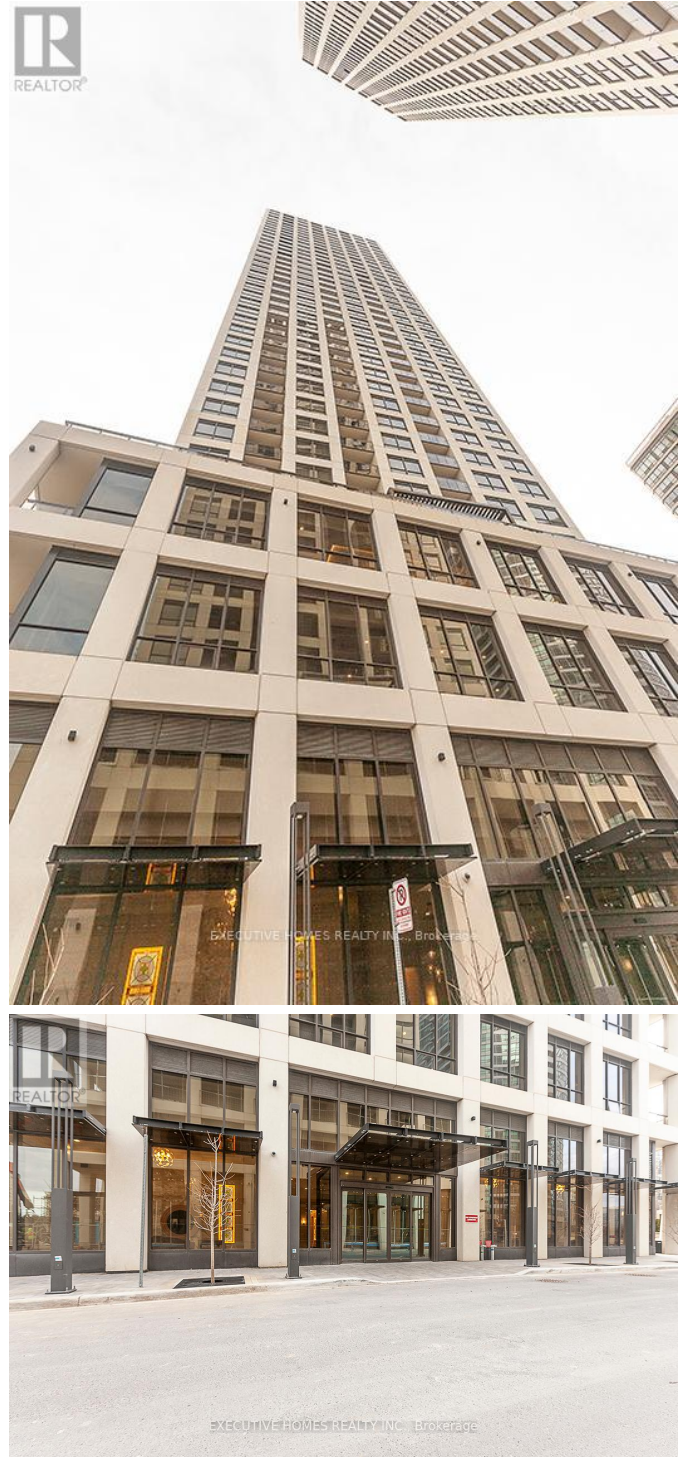
3 Bedrooms, 2 Bathrooms Single Family

2507 - 36 ELM DRIVE, Mississauga,
Ontario, L5B0N3

Corner Unit, Luxury Condo In The city Of Mississauga, Two Bedroom & Two Washroom Bright And Spacious, 9" Smooth Ceiling, Modern Kitchen With Centre Island, Throughout Laminate Floor, Amenities Include Exercise Room, Games Room, Theater, Roof Top Patio, Close to Square One Shopping Mall, Celebration Square, Park, Restaurants, Library, Sheridan College, Public Transit, 24 Hours Concierge
**** EXTRAS **** New Appliances: B/I Fridge, B/I Dishwasher, Cook Top Oven, Stacked Washer & Dryer, All Electrical Light Features, New Blinds (id:54154)



\$3400.00 / Monthly - 2507 - 36 ELM DRIVE



MLS®, REALTOR®, and the associated logos are trademarks of The Canadian Real Estate Association

Data Provided by: Toronto Regional Real Estate Board

Last Modified: 14/05/2024 12:39:45 AM

Listing Office:EXECUTIVE HOMES REALTY INC.