

# \$3700.00 / Monthly - 1012 - 220 MISSINNIHE WAY

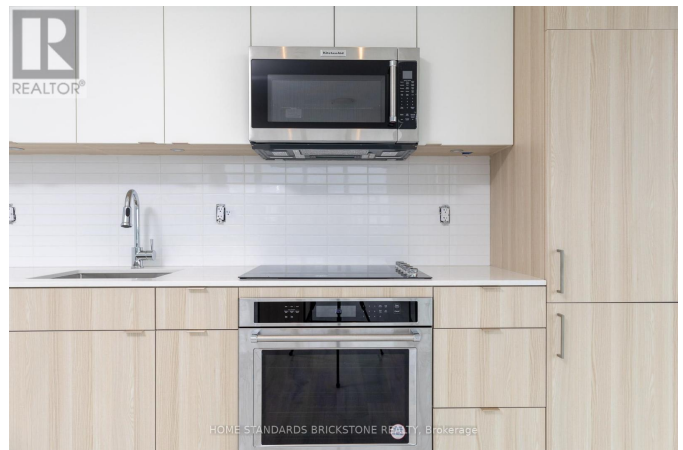
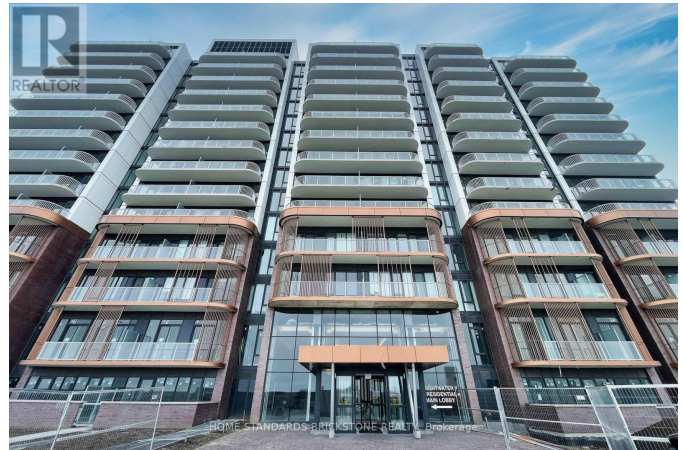
## Listing ID: W8292704

**\$3700.00 / Monthly**

3 Bedrooms, 2 Bathrooms Single Family

1012 - 220 MISSINNIHE WAY,  
Mississauga, Ontario, L5H0A9

Welcome to the Brightwater II in Port Credit Waterfront Community! Brand New Condo Two + Den 985 sf interior plus 284 sf for 2 Balconies. Sunny South Facing Lake View Unit at the Fabulous Brightwater! Relax in the sunfilled Suite, Living room & Kitchen with the beautiful unobstructed Lake and City view. The Modern Kitchen Is Equipped With A Built-in Fridge, Dishwasher, Stainless Steel OTR Microwave, And Stove. Steps To The Waterfront Trail With Breathtaking Views of Lake Ontario Luxury Resort Style Living In The Heart Of Port Credit, Close To Highways, Shopping & Dining, Waterfront Trails, Minutes To GO Train & Public Transit System. Residence Will Benefit From A Community Shuttle Bus To The GO Train Station. \*\*\*\* EXTRAS \*\*\*\* Amenities will include 24hr concierge, large parcel storage, Pet spa, Bike storage, Entertainment lounges/party rooms, Gym, outdoor dining & BBQs, Yoga & meditation spaces, Rooftop terrace/sun deck, co-working space and ground-level retail. (id:54154)



MLS®, REALTOR®, and the associated logos are trademarks of The Canadian Real Estate Association

Data Provided by: Toronto Regional Real Estate Board

Last Modified: 14/05/2024 12:34:50 AM

Listing Office:HOME STANDARDS BRICKSTONE REALTY