

# \$3350.00 / Monthly - 2309 - 45 KINGSBRIDGE CIRCLE

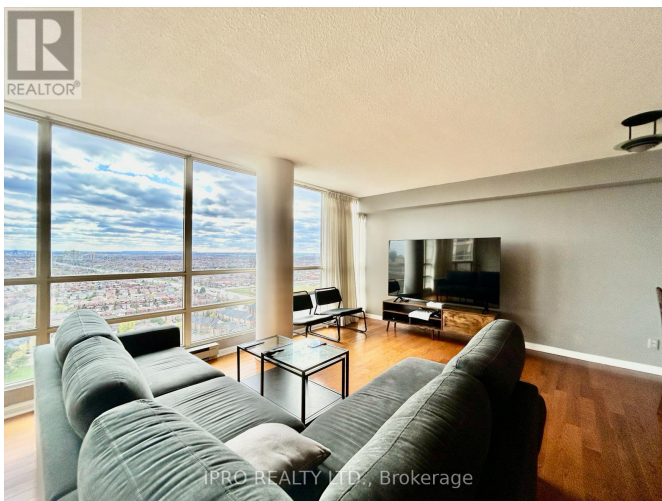
## Listing ID: W8282190

**\$3350.00 / Monthly**

2 Bedrooms, 1 Bathrooms Single Family

2309 - 45 KINGSBRIDGE CIRCLE,  
Mississauga, Ontario, L5R3K4

Welcome to this posh condo living !Open concept ,spacious and bright condo with 2 bedrooms & 1 bath. High-speed Internet is included at No Cost! Absolute Prime Location with almost everything within walking distance to Grocery Shopping, Schools, Banks, Restaurants, Parks and Square-1 Shopping Center Beautiful breathtaking views , Floor-to-Ceiling Windows and Gorgeous Sunset Views. Walk to Future LRT ,Transit. Close to Hwy403/Hwy401,Airport. New immigrants with reliable employment will be considered. \*\*\*\* EXTRAS \*\*\*\* Amenities include Car wash, Conceirge, Gym, Pool, Meeting Room, Garage, Patio, Rooftop Party room, Sauna, Squash Court, tennis court, visitor Parking (id:54154)



## 45 Kingsbridge Garden Circle – Park Mansion



MLS®, REALTOR®, and the associated logos are trademarks of The Canadian Real Estate Association

Data Provided by: Toronto Regional Real Estate Board

Last Modified: 14/05/2024 12:32:47 AM

Listing Office:IPRO REALTY LTD.