

\$2500.00 / Monthly - #410 -220 MISSINNIHE WAY

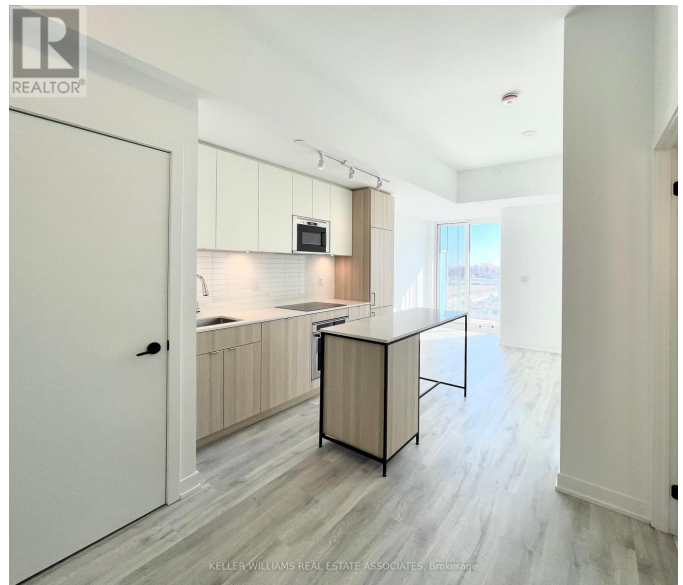
Listing ID: W8140908

\$2500.00 / Monthly

2 Bedrooms, 1 Bathrooms Single Family

#410 -220 MISSINNIHE WAY,
Mississauga, Ontario, L5H0A9

So fresh & so clean! Here is your opportunity to be the first tenant in this stunning & bright unit, in the coveted Port Credit Brightwater community. This 1 bed + den, 1 bath unit boasts south-facing sunshine throughout the day. A well-appointed floorplan includes a large entry w/double closet, a separate den space perfect for an office or extra living, and water views from the balcony. Includes 1 parking, access to future amenities including a gym, two party rooms, co-working space, outdoor space with BBQ & a pet wash station! Walking distance from downtown Port Credit, waterfront trails, Loblaws, banks, and soon-to-be retailers and amenities in Brightwater community, including Farm Boy and a shuttle service to Port Credit GO! **** EXTRAS **** All brand new appliances (Induction Cooktop, Dishwasher, Fridge, Microwave, Hood, Washer/Dryer), all electrical fixtures. (id:54154)



MLS®, REALTOR®, and the associated logos are trademarks of The Canadian Real Estate Association
Data Provided by: Toronto Regional Real Estate Board
Last Modified: 05/04/2024 03:29:06 PM
Listing Office: KELLER WILLIAMS REAL ESTATE ASSOCIATES